







# MILITARY FRIENDLY? REALLY?

Ramona McAfee  
Columbia College  
Coast Guard ESO Symposium  
August 2011



# MILITARY FRIENDLY

## ➤ Define Military Friendly

- Member of SOC/SOCCOAST
  - Accepts federal tuition assistance
  - Flexible course schedules
  - Recognizes ACE credit recommendations
  - Ranked in the top 20 or 50 by a publication
- 
- 
- 
- 



# MILITARY FRIENDLY

Student centric.

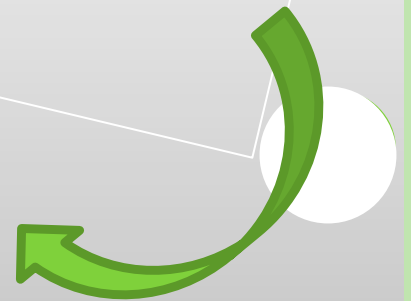
It is always about the student.





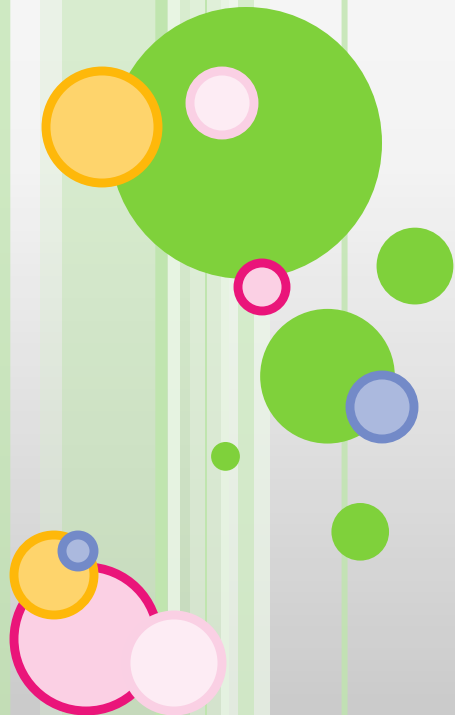
# RATINGS

- The Surveys
- Who is selected?
- Catch 22
- Checking the survey results



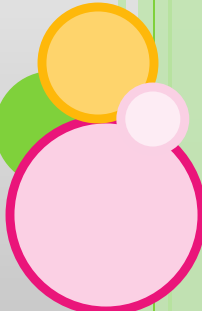
# MUST HAVES

- ❑ Signed DoD MOU
- ❑ SOC Consortium Membership
- ❑ Centralized office dedicated to serving the informational needs of military transfer student population, to include veterans
- ❑ Military student admissions team
- ❑ Flexible transfer credit policies & practices, including military credit



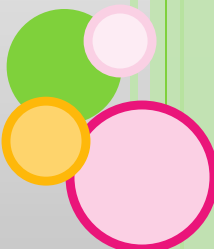


# MUST HAVES

- Payment structure allowing for MTA, GI Bill and other VA funding sources
  - Dedicated military student advisors and evaluators
  - Clearly defined withdrawal and leave of absence policies for military students
  - Variety of class schedules and delivery methods
- 

# NICE TO HAVE

- ❑ Special programs for military spouses and family members
- ❑ Tuition within the MTA cap
- ❑ Reduced residency requirements (beyond SOC requirement)
- ❑ SOC Degree Network System Membership
- ❑ Alternative admissions criteria



# NICE TO HAVE

- ❑ Specialty degree programs designed for military student population
- ❑ Participation in military specific registration portals
- ❑ Participation in military education programs
- ❑ Presence or representation at military bases

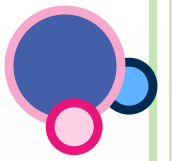
# GUIDING STUDENTS

## Online Resources

- ❑ Be informed
- ❑ History of serving military students
- ❑ Web pages for military/veteran students

## Personal Knowledge

- ❑ How does the school staff treat students
- ❑ Personal contact
- ❑ Quality education for a fair price



# THE BOTTOM LINE

## Serve the Service Member

- Be Student Centric
- Be Flexible
- Be Knowledgeable
- Be Friendly
- Be Willing to Say “Yes”
- Be Committed





# QUESTIONS

**Thank you!**

**Ramona McAfee  
Columbia College  
573-875-7579  
rmcafee@ccis.edu**